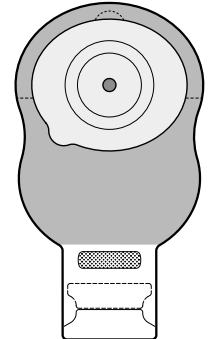


## Application card

### EsteemBody™

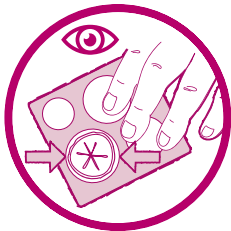
#### One-piece soft convex drainable pouch: Application

Before application, ensure your hands and the skin surrounding the stoma are clean, dry and free from oily substances.



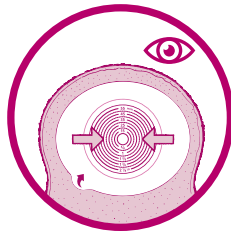
#### Preparation and application

1



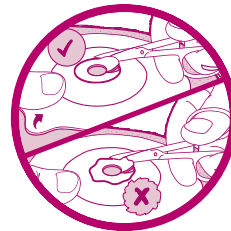
Place the stoma measuring guide over your stoma to confirm the correct size.

2



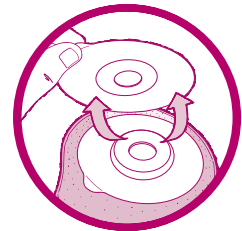
If using a pre-cut skin barrier, select a skin barrier with a pre-cut stoma opening slightly larger than your stoma.

3



If using a cut-to-fit skin barrier, transfer the size to your skin barrier and cut accordingly.

4



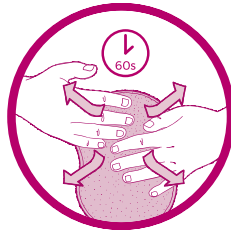
Remove skin barrier release liner.

5



Hold the skin barrier below your stoma and apply upwards against the skin around your stoma. Press the skin barrier against the skin.

6



Smooth onto your skin. Maintain slight pressure on the skin barrier for 60 seconds to ensure a good seal.

#### Scan to watch application video



Learn more at [convatec.com](https://convatec.com) or contact us at 1-800-422-8811 or [cic@convatec.com](mailto:cic@convatec.com).

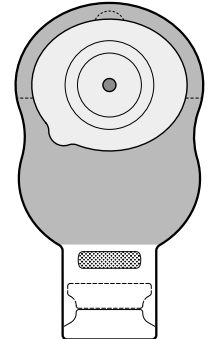
See package insert for complete instructions for use.

## Application card

### EsteemBody™

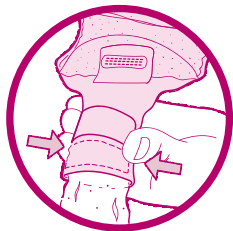
#### One-piece soft convex drainable pouch: Removal, Emptying, Disposal

After emptying and/or disposing of your pouch, wash your hands.



#### Emptying

1



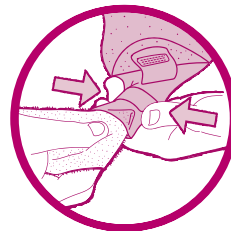
Open the tail by pushing in both ends of the outlet. Empty the contents into the toilet.

2



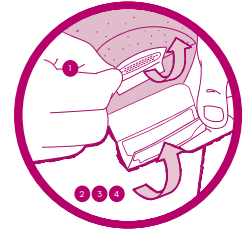
Support the pouch with one hand and wipe the tail in a firm downward motion with clean tissue.

3



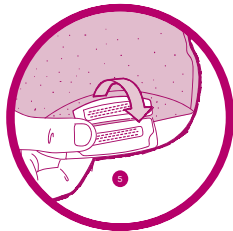
Clean the inside surface of the tail with clean tissue or wipes.

4



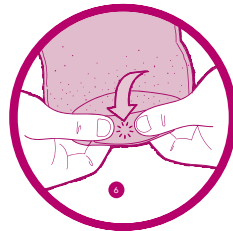
1. Fold securing strip to the up position
2. Make fold 1 in the tail closure using plastic strips as a guide
3. Repeat for fold 2
4. Repeat for fold 3

5



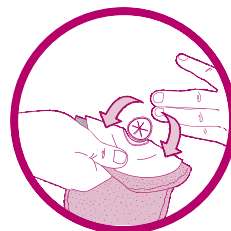
Hold tail closure whilst folding down securing strip

6



Squeeze with thumb and fingers. You will feel it lock into place

1



Start by gently lifting the top edge of the barrier, then slowly and gently peel downward.

2



Dispose of the pouch according to local disposal regulations

#### Scan to watch application video



Learn more at [convatec.com](http://convatec.com) or contact us at 1-800-422-8811 or [cic@convatec.com](mailto:cic@convatec.com).

See package insert for complete instructions for use.